

Local Market Update – November 2011

A RESEARCH TOOL PROVIDED BY THE UPSTATE ALLIANCE OF REALTORS® MULTIPLE LISTING SERVICE



Allen County

+ 0.5%

Change in
New Listings

+ 17.3%

Change in
Closed Sales

- 12.5%

Change in
Median Sales Price

November

Year to Date

	2010	2011	+ / -	2010	2011	+ / -
New Listings	440	442	+ 0.5%	7,279	6,811	- 6.4%
Closed Sales	278	326	+ 17.3%	3,675	3,608	- 1.8%
Median Sales Price	\$109,700	\$96,000	- 12.5%	\$107,000	\$103,825	- 3.0%
Percent of Original List Price Received at Sale*	93.8%	94.9%	+ 1.1%	95.0%	95.0%	- 0.0%
Average Price Per Square Foot	\$65	\$64	- 2.0%	\$65	\$65	- 0.4%
Months Supply of Inventory	7.1	7.1	+ 0.8%	--	--	--
Single-Family Detached Inventory	2,181	2,109	- 3.3%	--	--	--
Townhouse-Condo Inventory	166	175	+ 5.4%	--	--	--

* Does not account for list prices from any previous contracts. | Activity for one month can sometimes look extreme due to small sample size.

November

■ 2010 ■ 2011

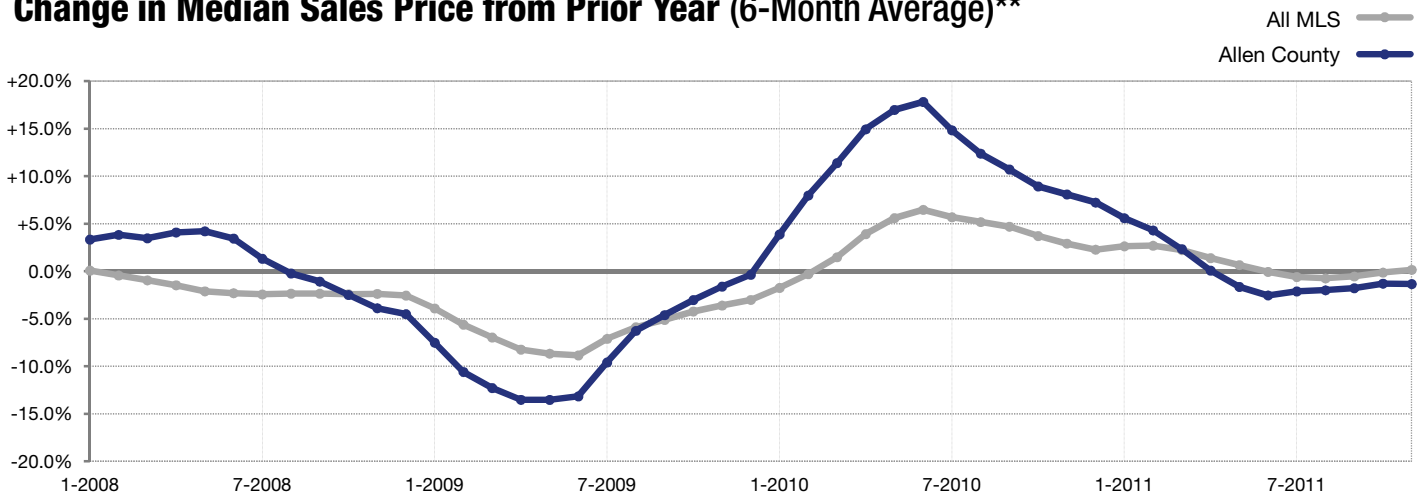


Year to Date

■ 2010 ■ 2011



Change in Median Sales Price from Prior Year (6-Month Average)**



** Each dot represents the change in median sales price from the prior year using a 6-month weighted average. This means that each of the 6 months used in a dot are proportioned according to their share of sales during that period. | This report contains information compiled by the Indiana Association of REALTORS®, may contain content from sources other than the Upstate Alliance of REALTORS® Multiple Listing Service and may not reflect all real estate activity in the market. Statistical data is based on residential property listings and sales from the Indiana counties of Adams, Allen, DeKalb, Huntington, Noble, Wells and Whitley. | Powered by 10K Research and Marketing.